

Operator:  
Ghidini Lighting s.r.l

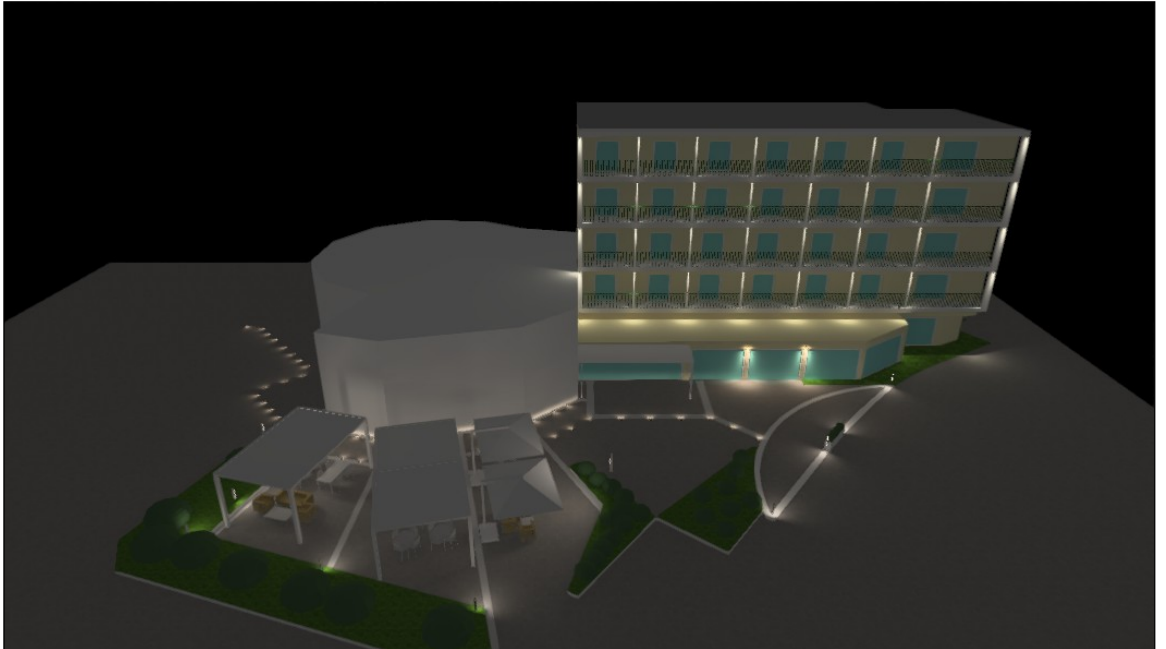
Via Monsuello 211 Lumezzane  
(BS) 25065 Italy

+39 030 8925625  
customerservice@ghidini.it


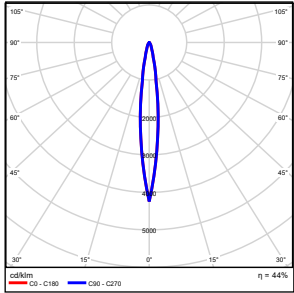
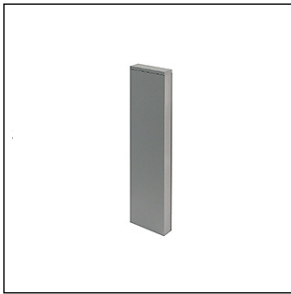
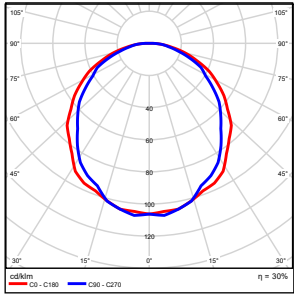
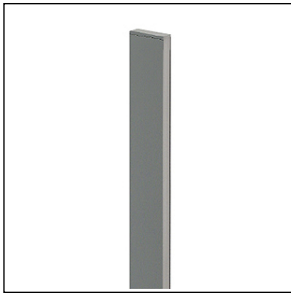
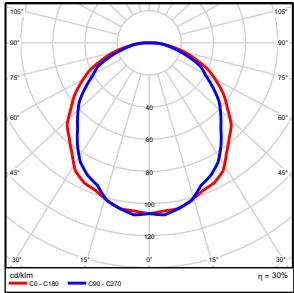

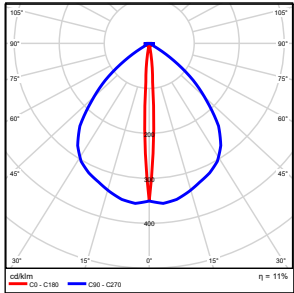

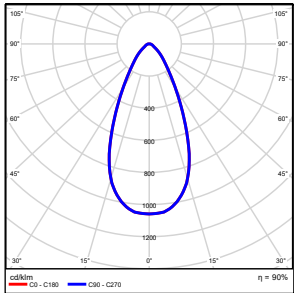
Date:  
01/12/2016

 **GHIDINI**<sup>TM</sup>  
LIGHT IDEAS

## Progetto esterni Santa Margherita Ligure



## Progetto esterni Santa Margherita Ligure

Quantity	Luminaire (Luminous emittance)		
32	Ghidini Lighting s.r.l. 1127.BDS.T Segno spot SQ 2W 3K spot 13° Luminous emittance 1 Fitting: 1xLed Light output ratio: 44.12% Lamp luminous flux: 210 lm Luminaire luminous flux: 93 lm Power: 2.0 W Luminous efficacy: 46.3 lm/W  Colourimetric data 1xLed: CCT 3259 K, CRI 84		
8	Ghidini Lighting s.r.l. 1422.AHX.O Rettangolo 600 7W Led 3K Luminous emittance 1 Fitting: 1xLed Light output ratio: 30.07% Lamp luminous flux: 600 lm Luminaire luminous flux: 180 lm Power: 7.0 W Luminous efficacy: 25.8 lm/W  Colourimetric data 1x: CCT 3208 K, CRI -		
2	Ghidini Lighting s.r.l. 1424.FNX.O Rettangolo 2500 28W Led 3K Luminous emittance 1 Fitting: 1xLed Light output ratio: 30.07% Lamp luminous flux: 3600 lm Luminaire luminous flux: 1082 lm Power: 28.0 W Luminous efficacy: 38.7 lm/W  Colourimetric data 1x: CCT 3208 K, CRI -		
48	Ghidini Lighting s.r.l. 6730.DBF.T Geos 3W 1Led 3K Luminous emittance 1 Fitting: 1xLed Light output ratio: 10.97% Lamp luminous flux: 275 lm Luminaire luminous flux: 30 lm Power: 3.0 W Luminous efficacy: 10.1 lm/W  Colourimetric data 1x: CCT 3000 K, CRI -		
2	Microfaro flat 8W flood 3K microfaro flat 8W flood 3K Luminous emittance 1 Fitting: 1xBridgelux_VERO10_(301000B)_758.633lm@250mA_ P=6.35346W_I=0.2499A Light output ratio: 90.04% Lamp luminous flux: 704 lm Luminaire luminous flux: 634 lm Power: 8.0 W Luminous efficacy: 79.2 lm/W  Colourimetric data 1x: CCT 3000 K, CRI -		

Total lamp luminous flux: 33328 lm, Total luminaire luminous flux: 9288 lm, Total Load: 336.0 W, Luminous efficacy: 27.6 lm/W

## Progetto esterni Santa Margherita Ligure

Area 1 (2)



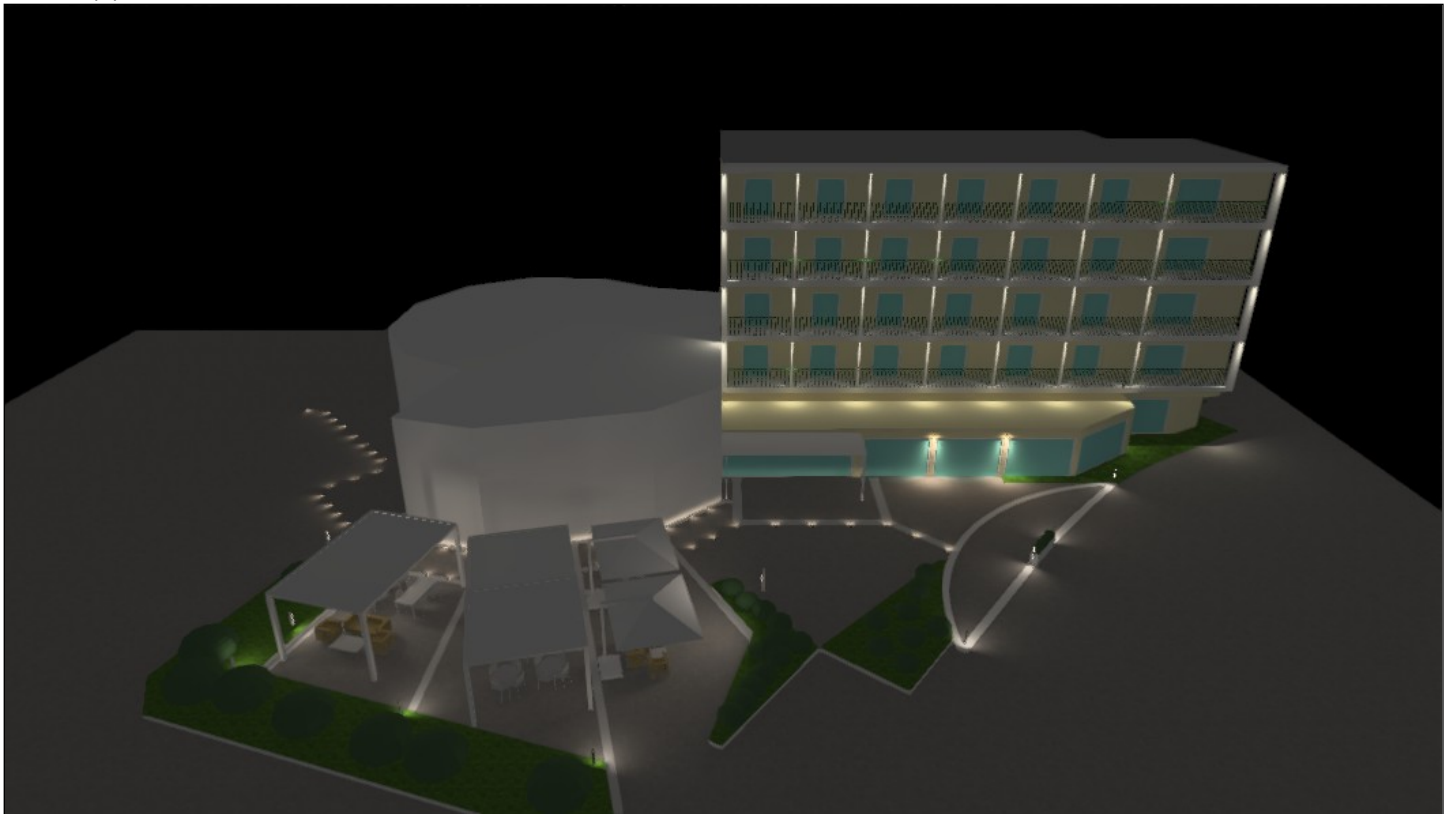
Area 1 (3)



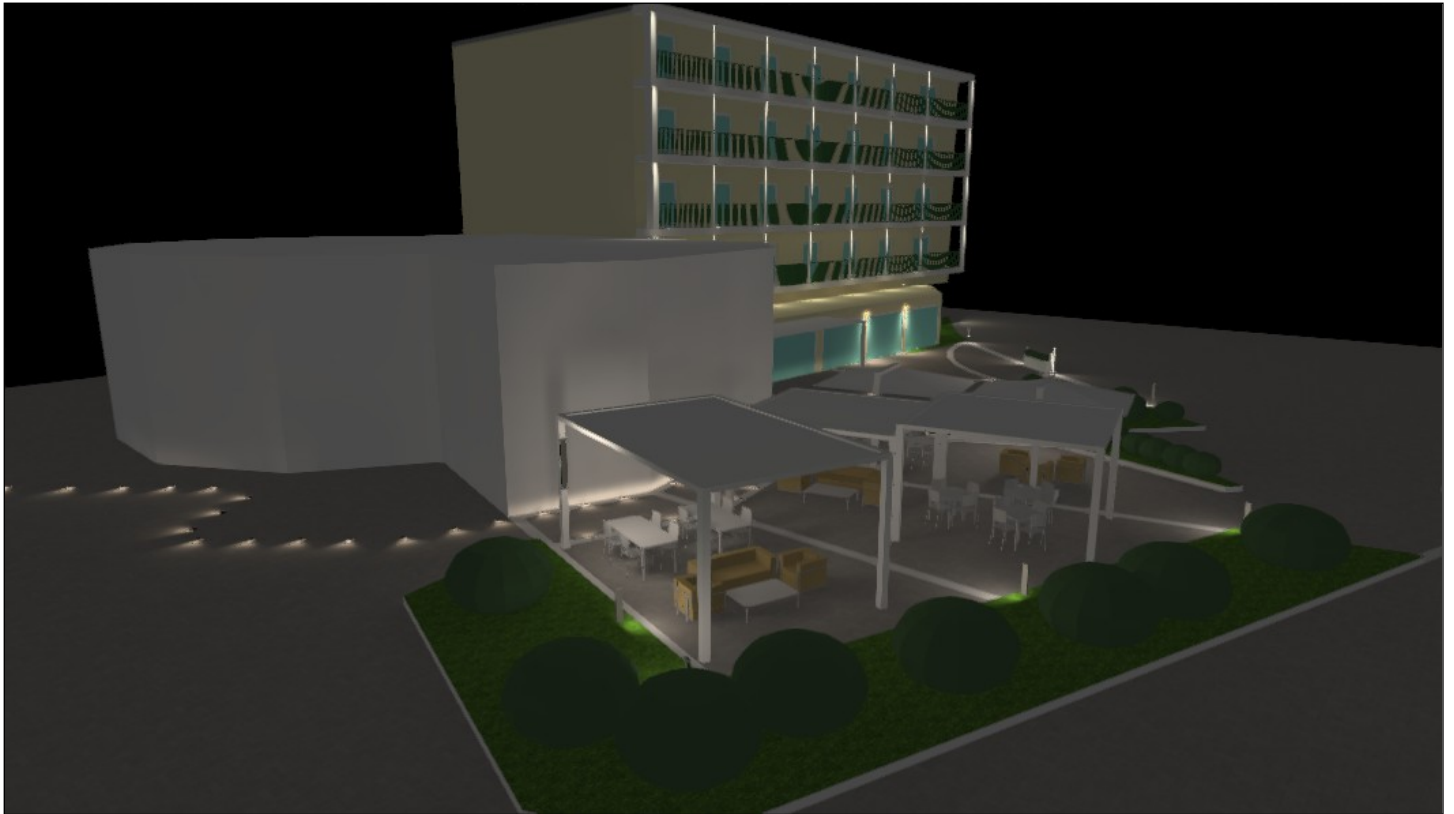
Area 1 (4)



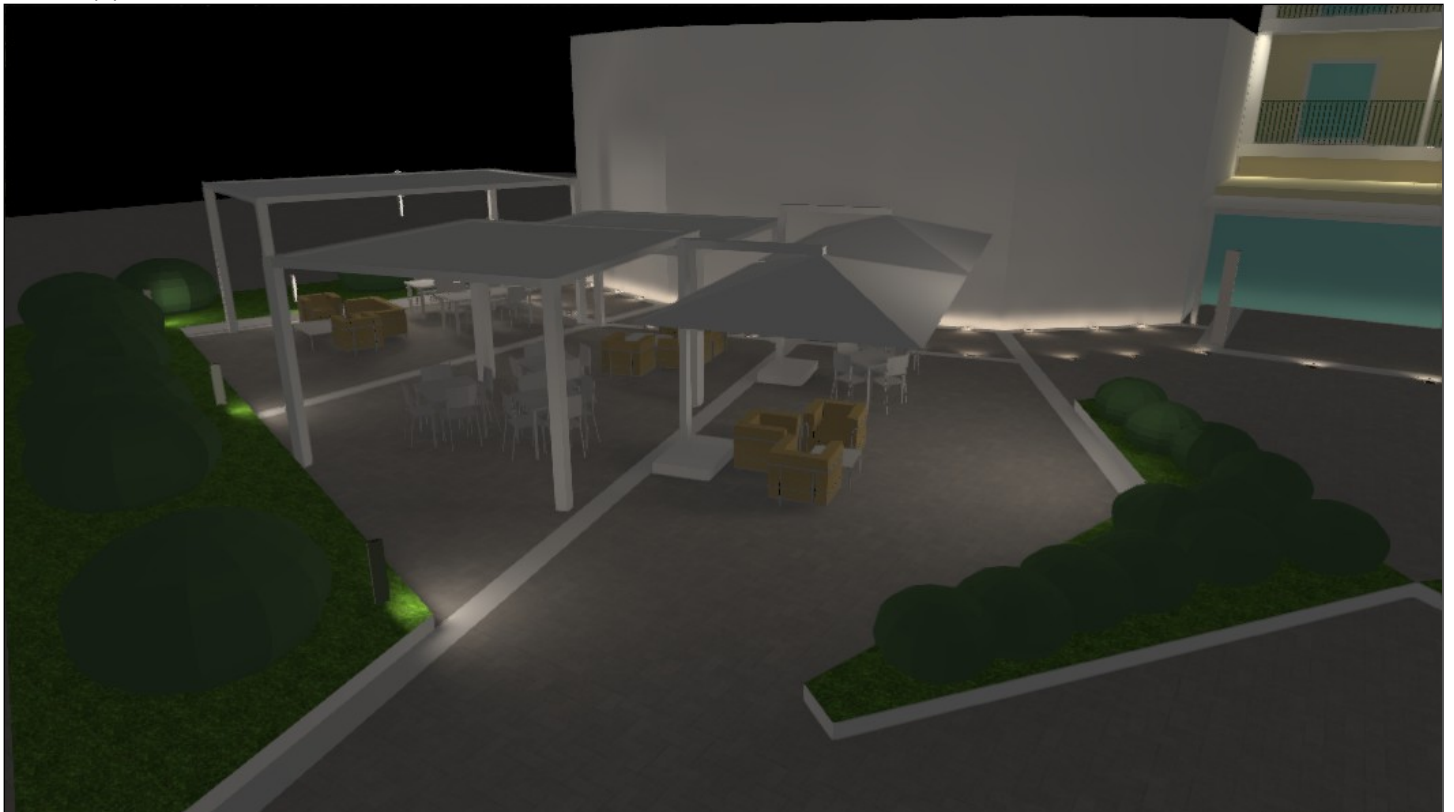
Area 1 (5)



Area 1 (6)

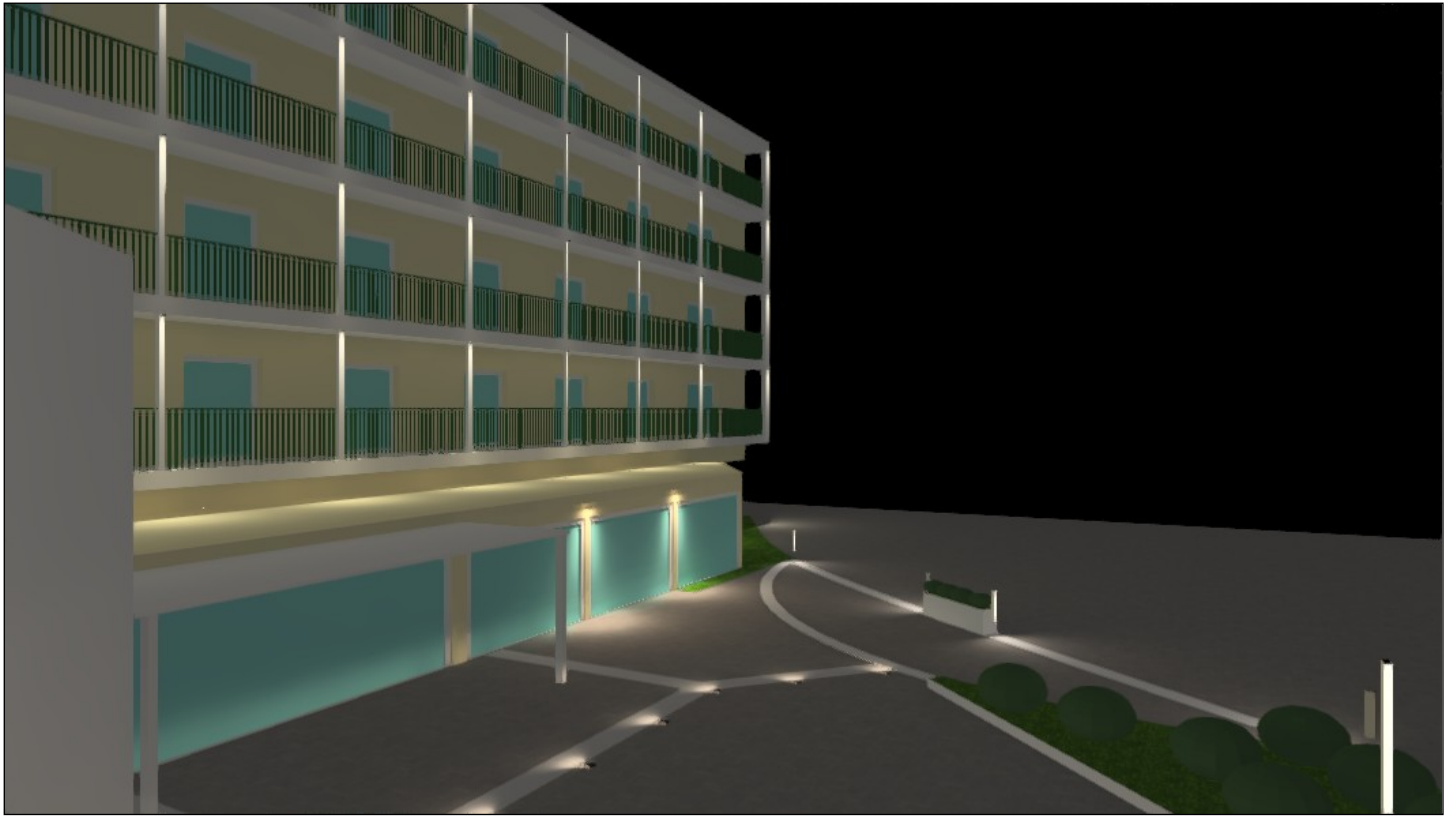


Area 1 (7)

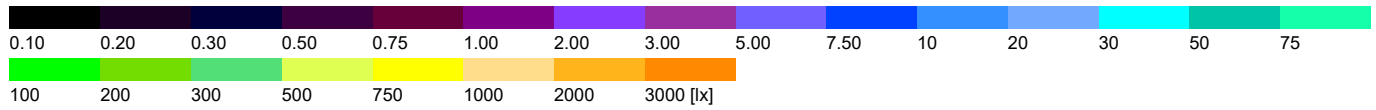
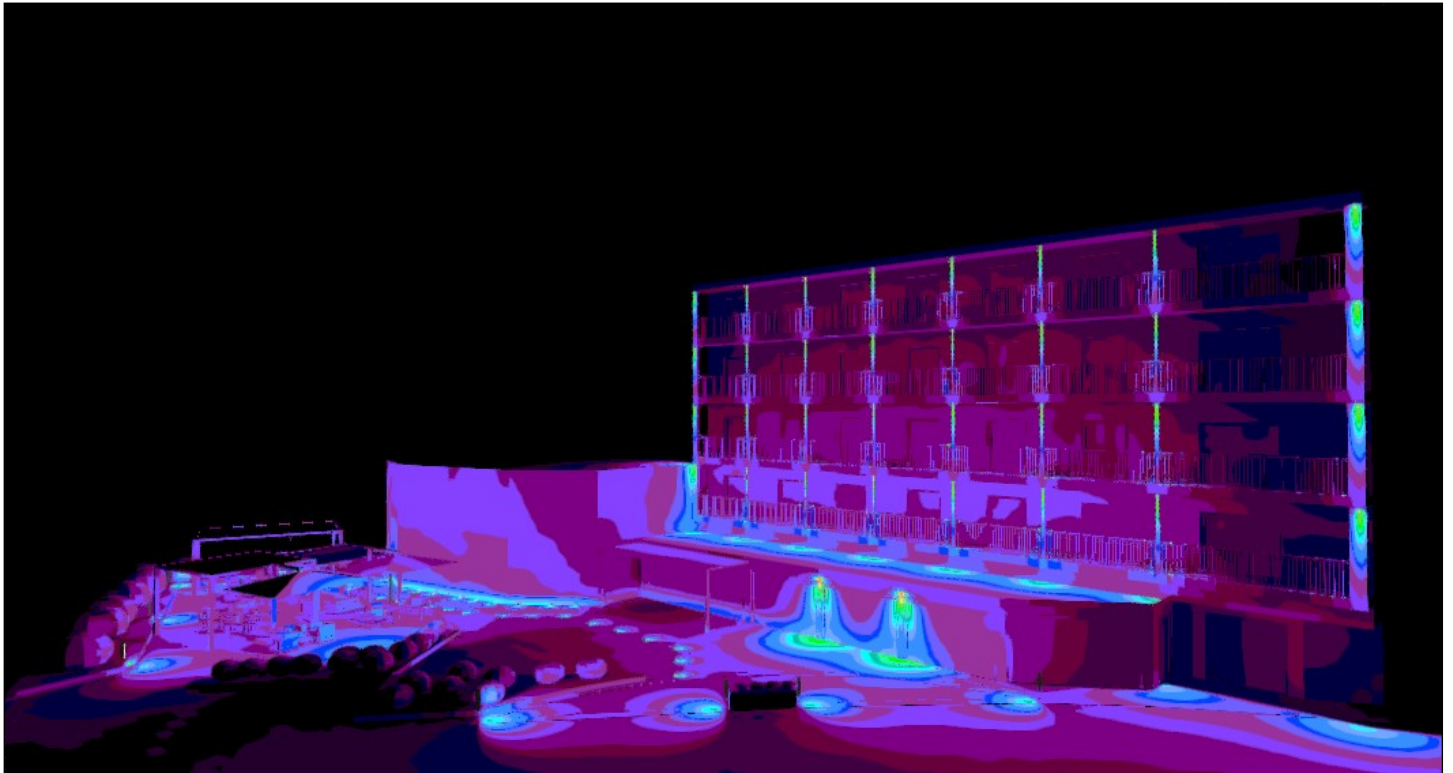




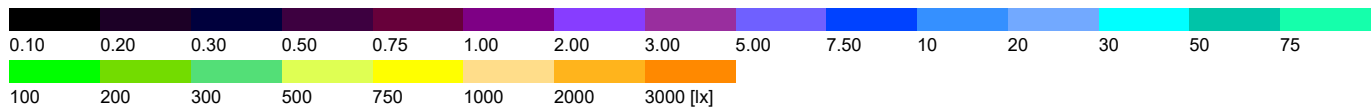
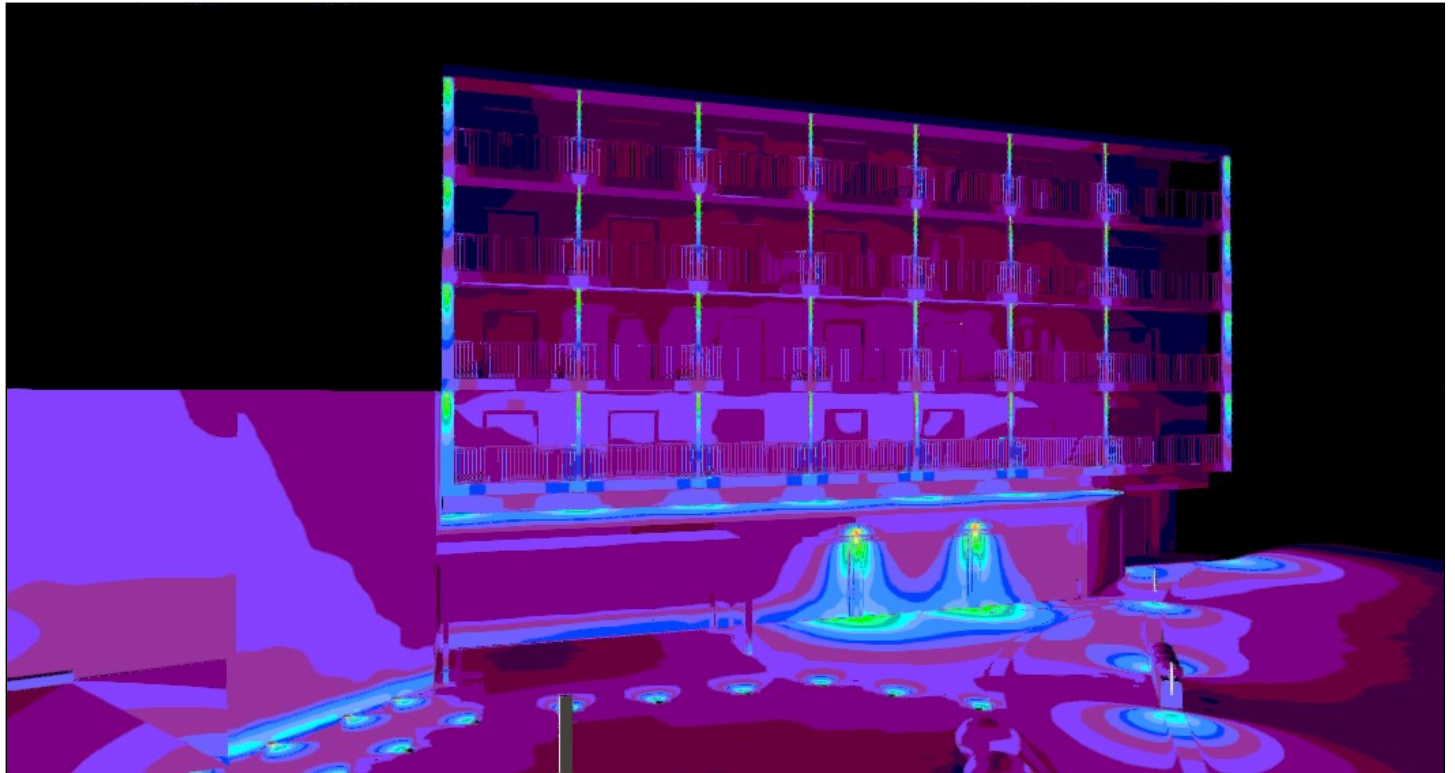
Area 1 (8)



Area 1 (9), Illuminance values in [lx]

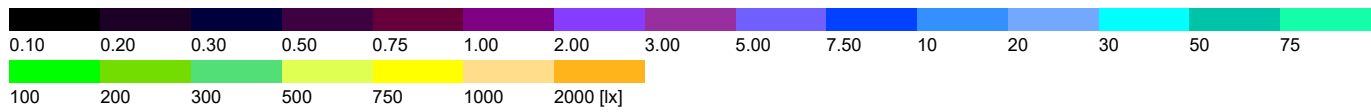
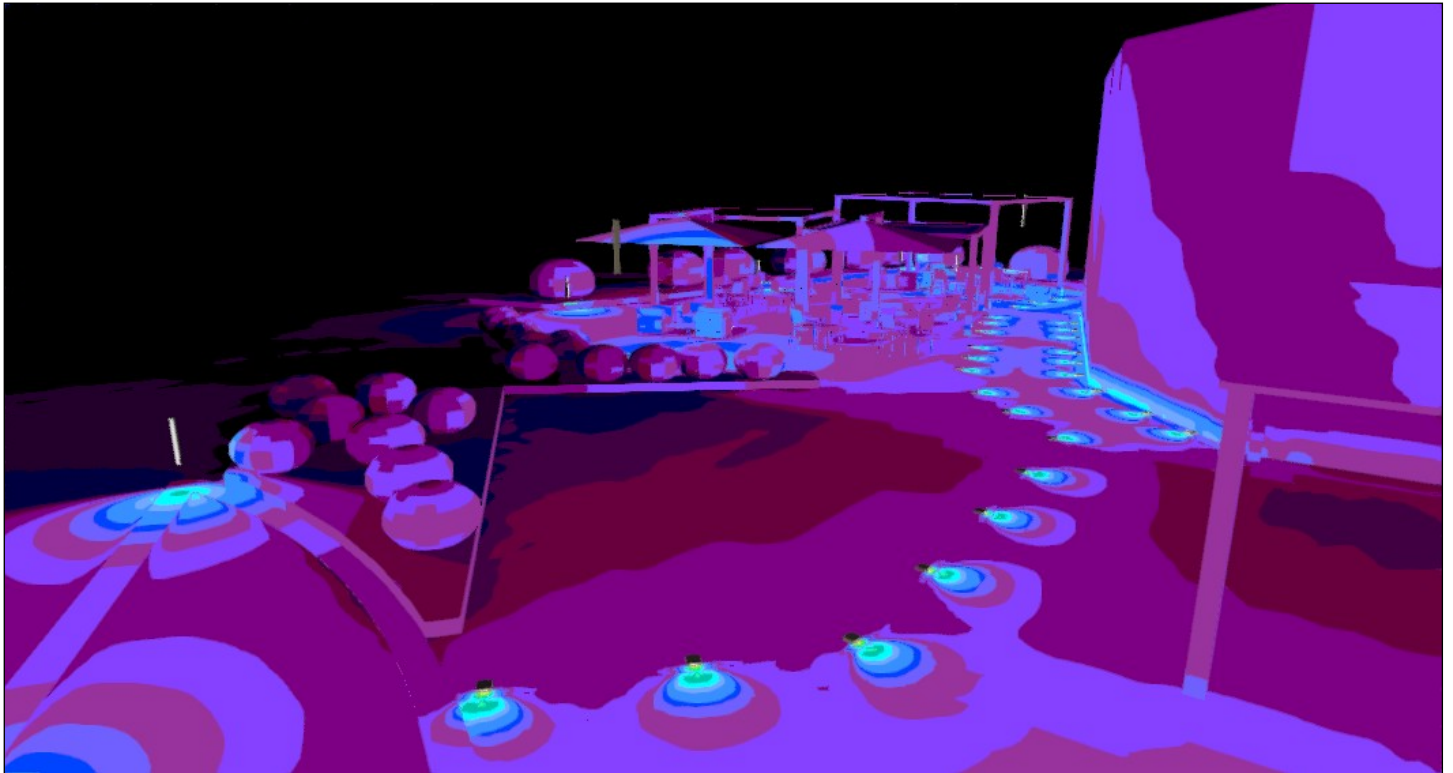


Area 1 (10), Illuminance values in [lx]

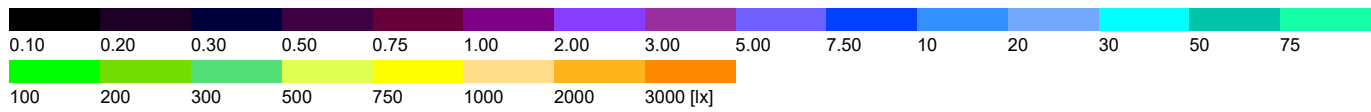
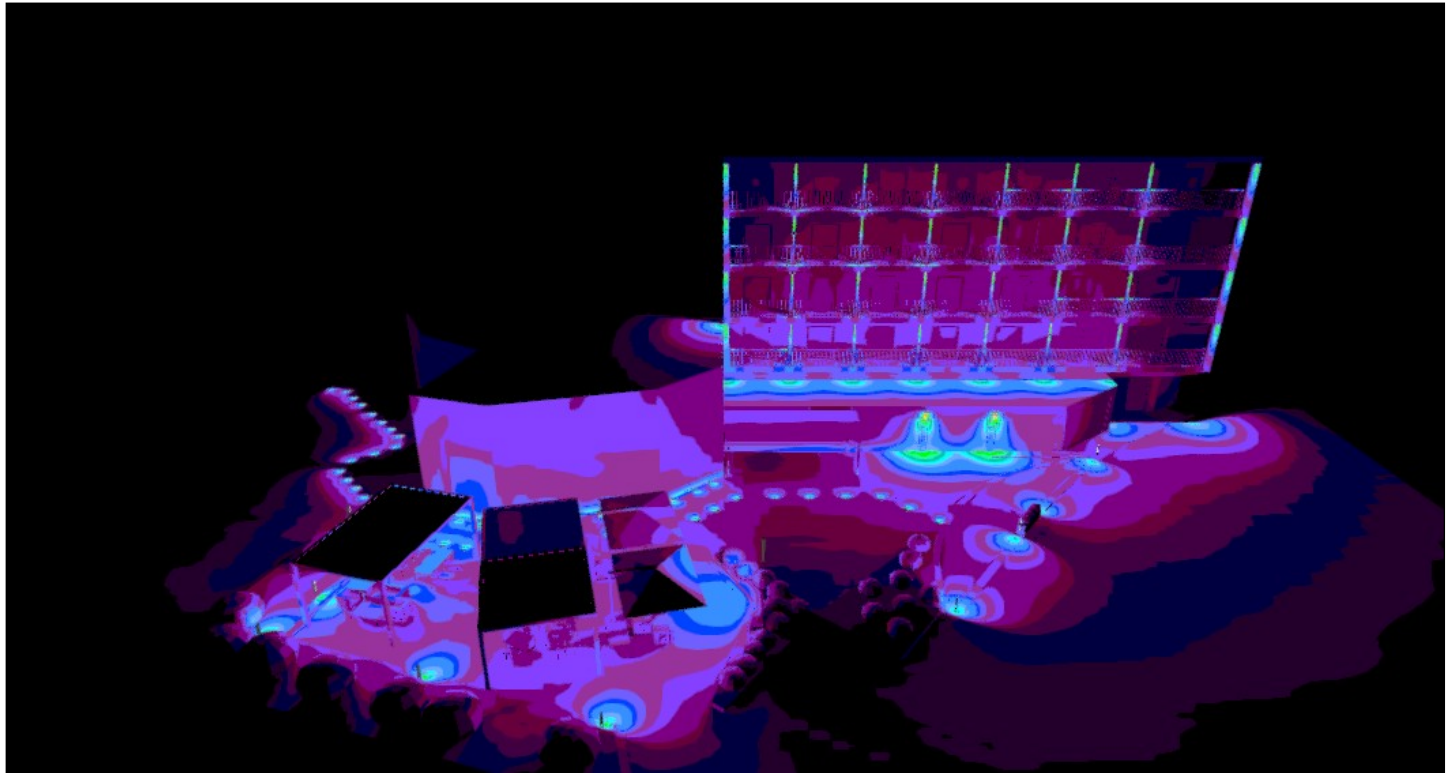




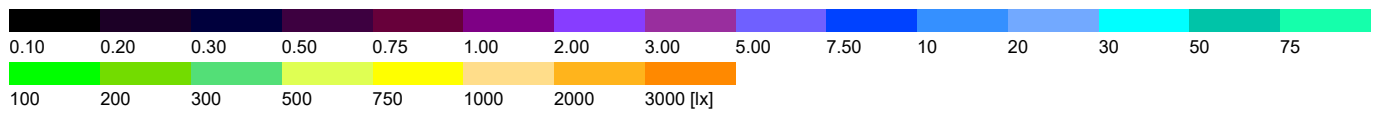
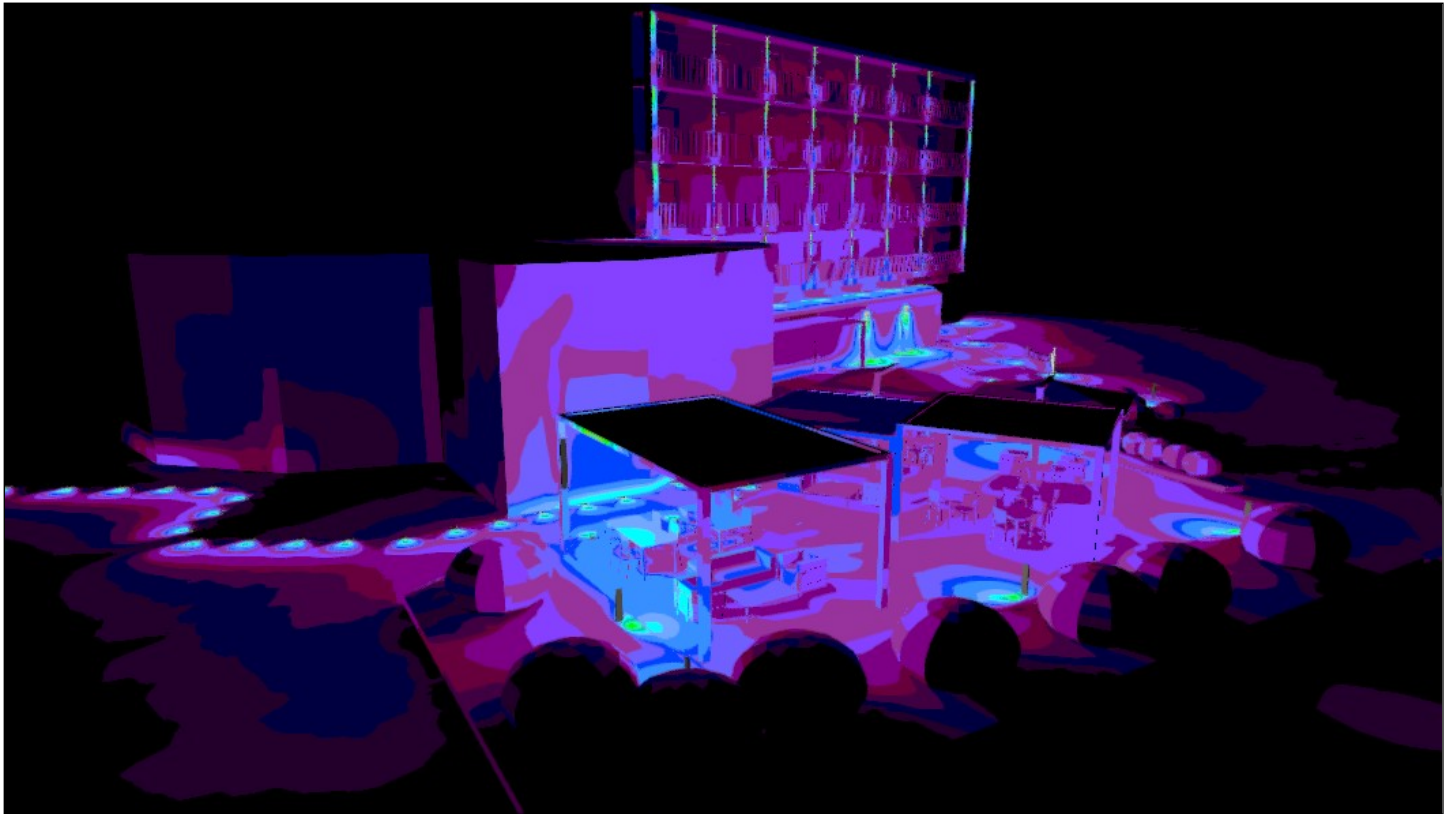
Area 1 (11), Illuminance values in [lx]



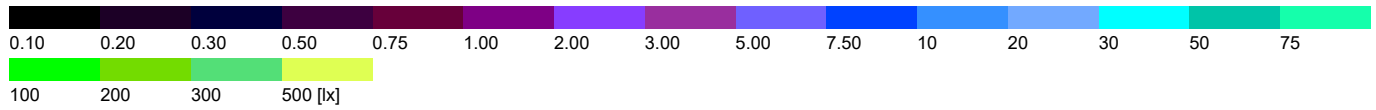
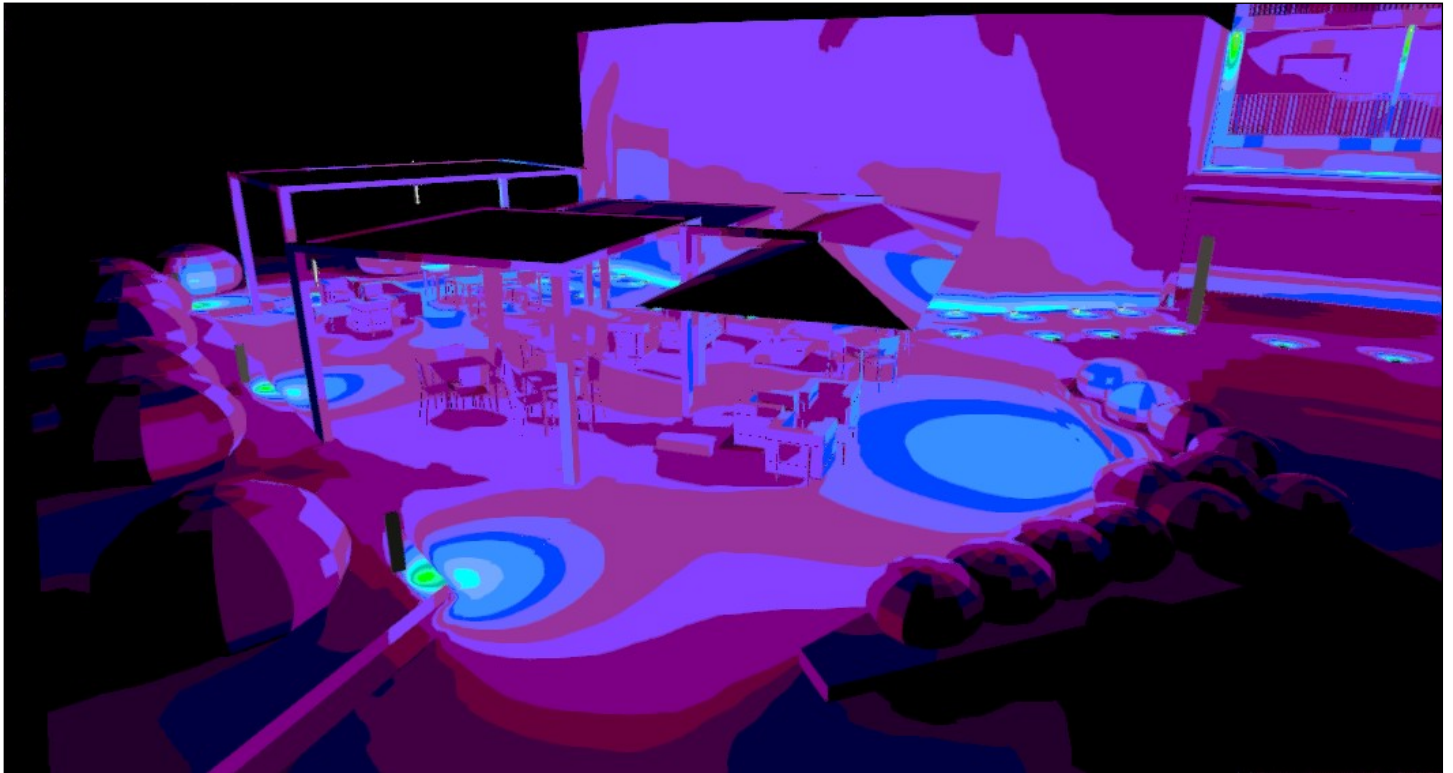
Area 1 (12), Illuminance values in [lx]



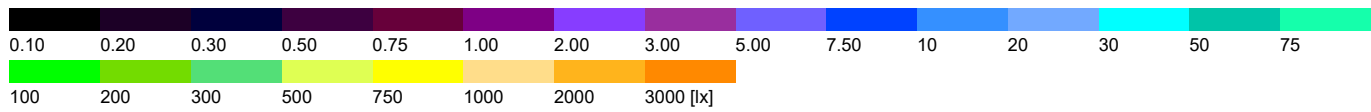
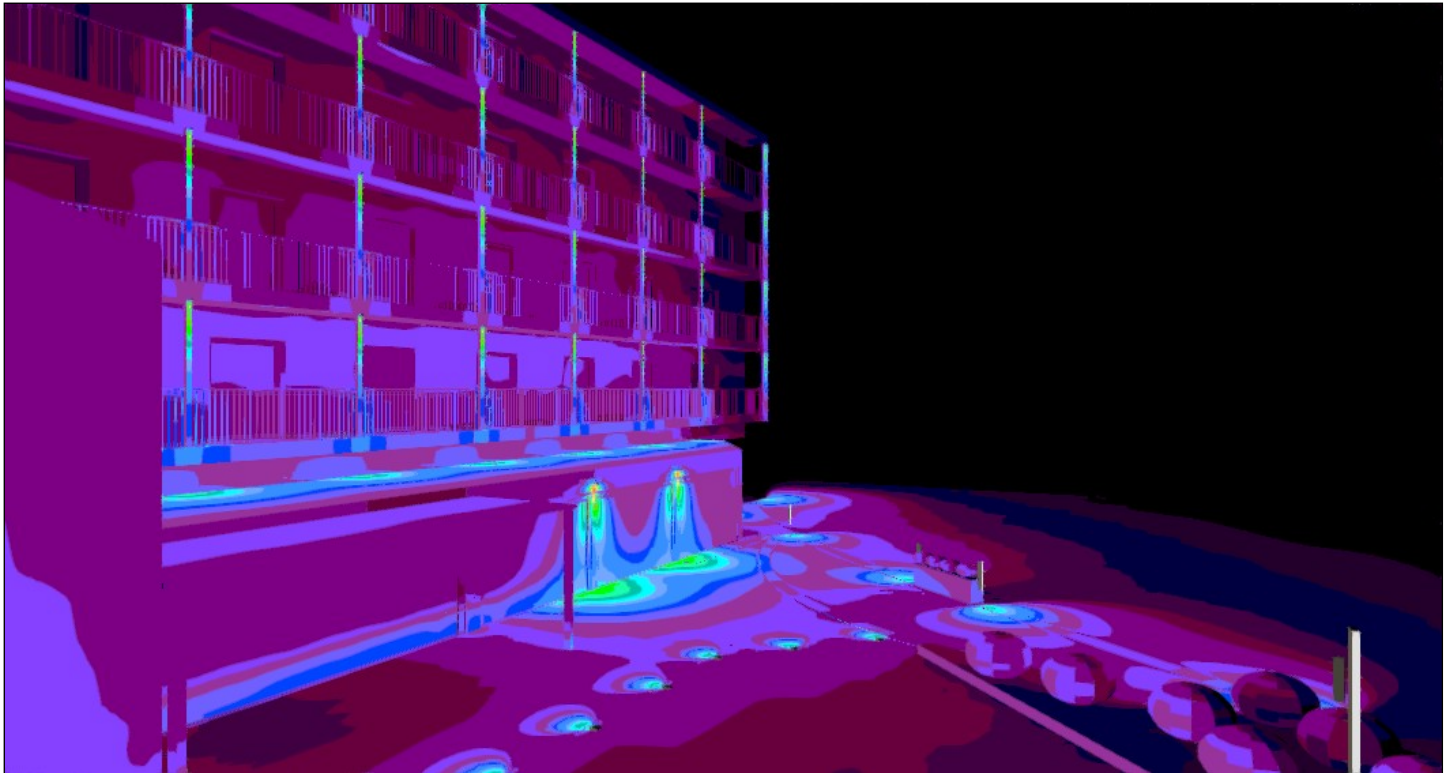
Area 1 (13), Illuminance values in [lx]



Area 1 (14), Illuminance values in [lx]

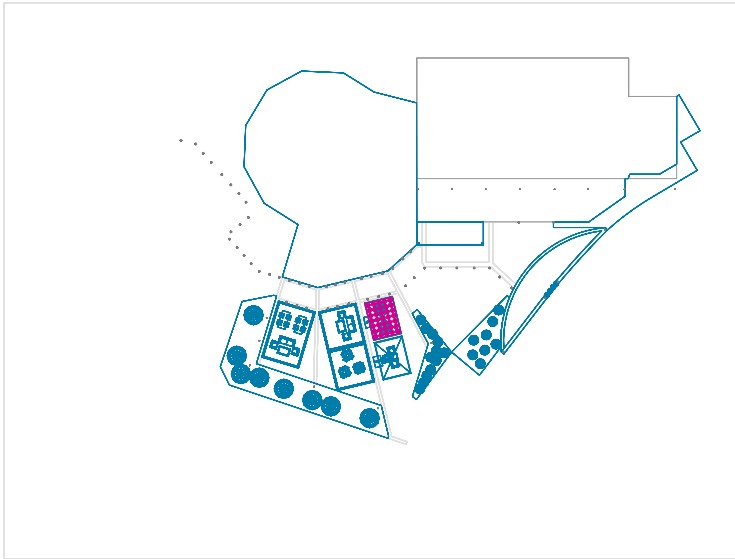


Area 1 (15), Illuminance values in [lx]





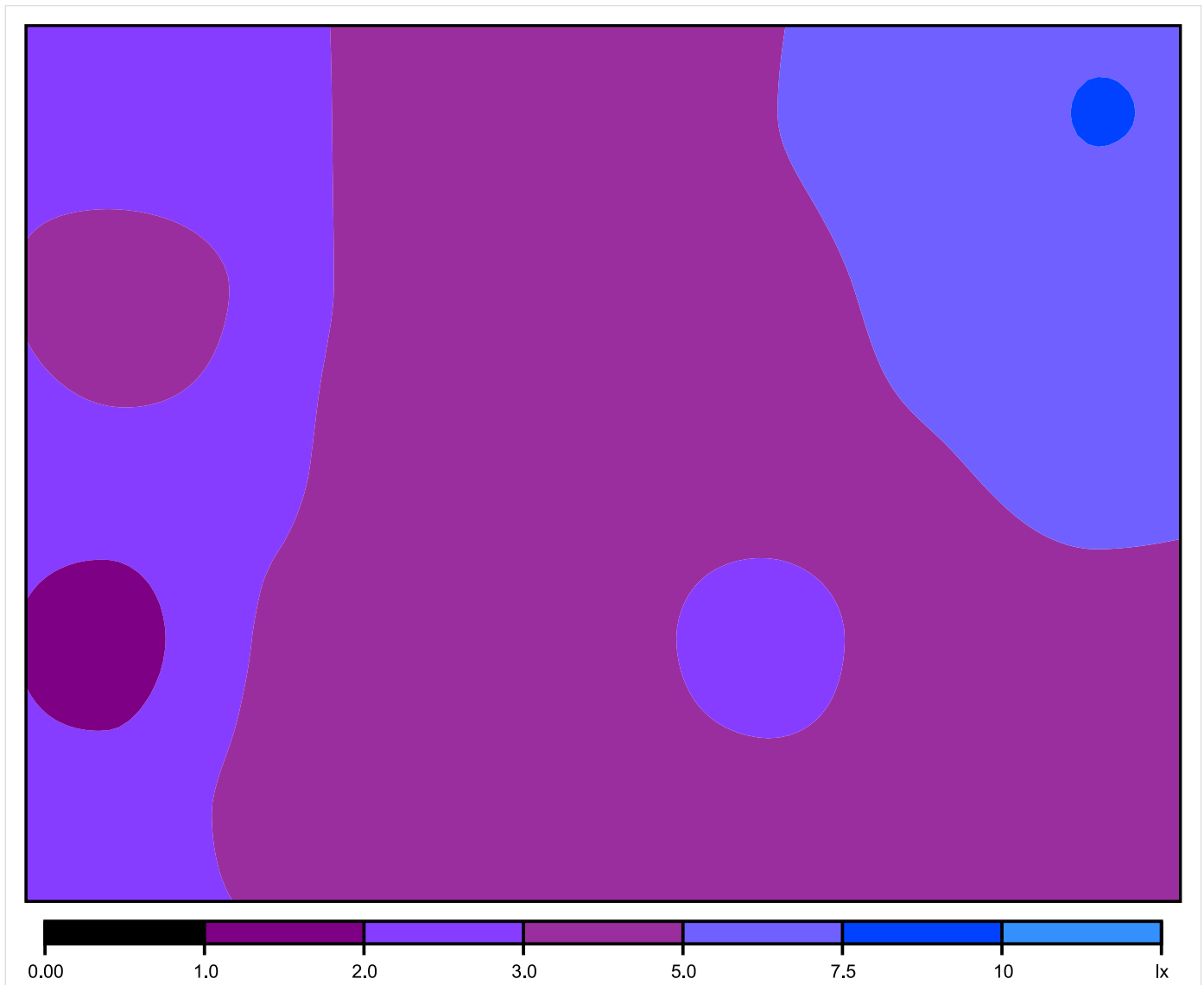
## Ombrellone 1



Profile: Aree di transito comuni nei luoghi di lavoro/ posti di lavoro all'aperto, Gallerie per pedoni, punti di inversione veicoli, zone di carico e scarico

Result	Average (Target)	Min	Max	Min/average	Min/max
Perpendicular illuminance [lx] Height: 0.800 m	3.90	1.62	7.58	0.42	0.21

## Ombrellone 1



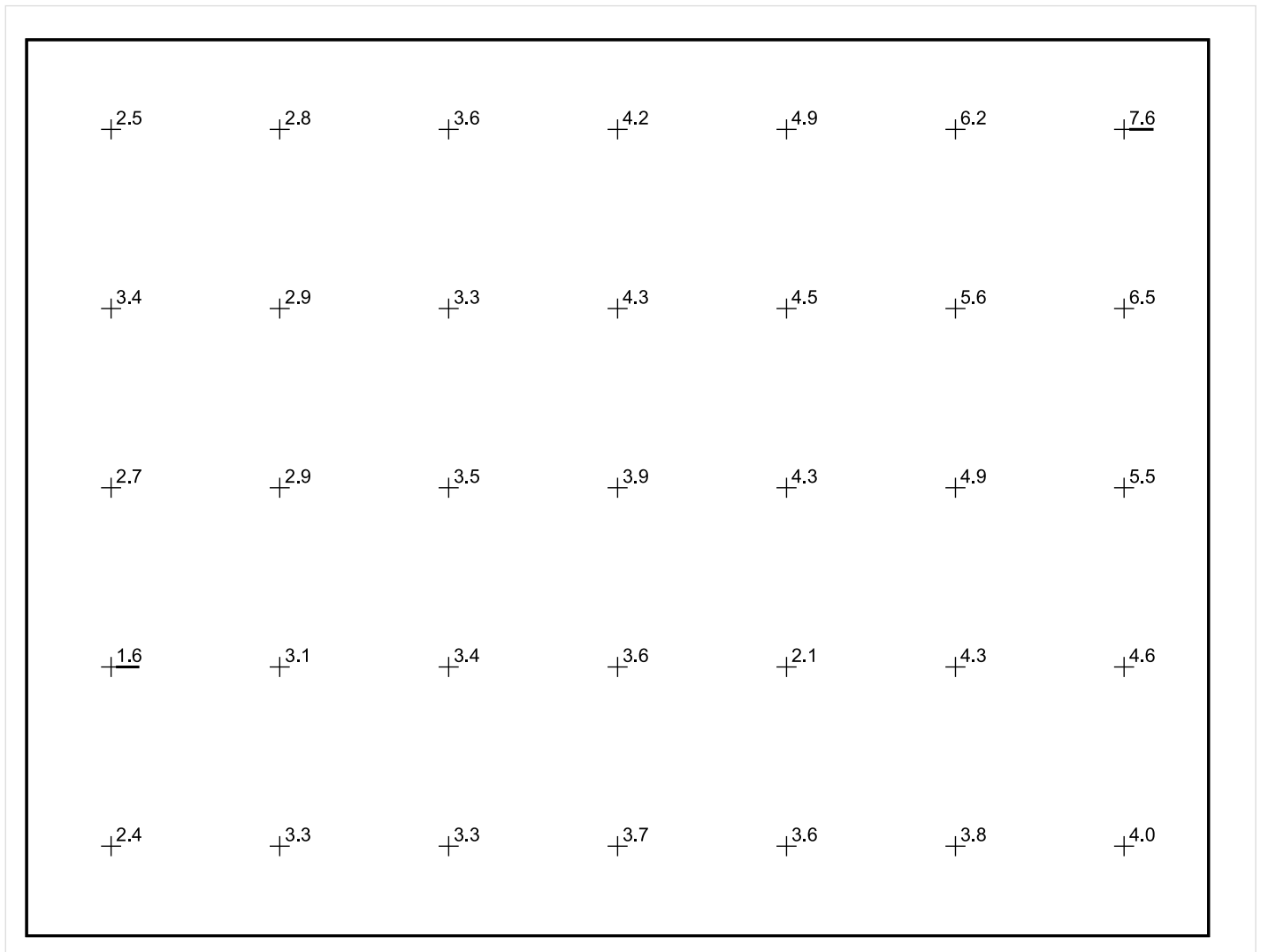
Scale: 1 : 22

Perpendicular illuminance (Grid)

Mean (actual): 3.90 lx, Min: 1.62 lx, Max: 7.58 lx, Min/average: 0.42, Min/max: 0.21

Height: 0.800 m

## Ombrellone 1



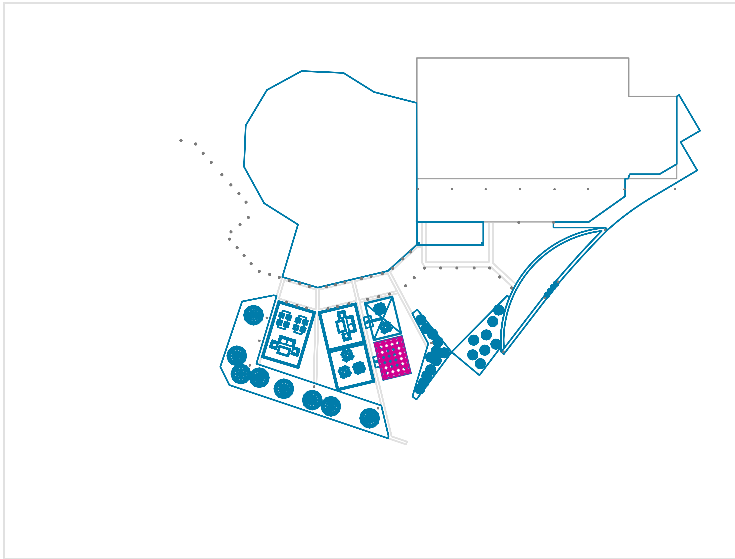
Scale: 1 : 22

Perpendicular illuminance (Grid)

Mean (actual): 3.90 lx, Min: 1.62 lx, Max: 7.58 lx, Min/average: 0.42, Min/max: 0.21

Height: 0.800 m

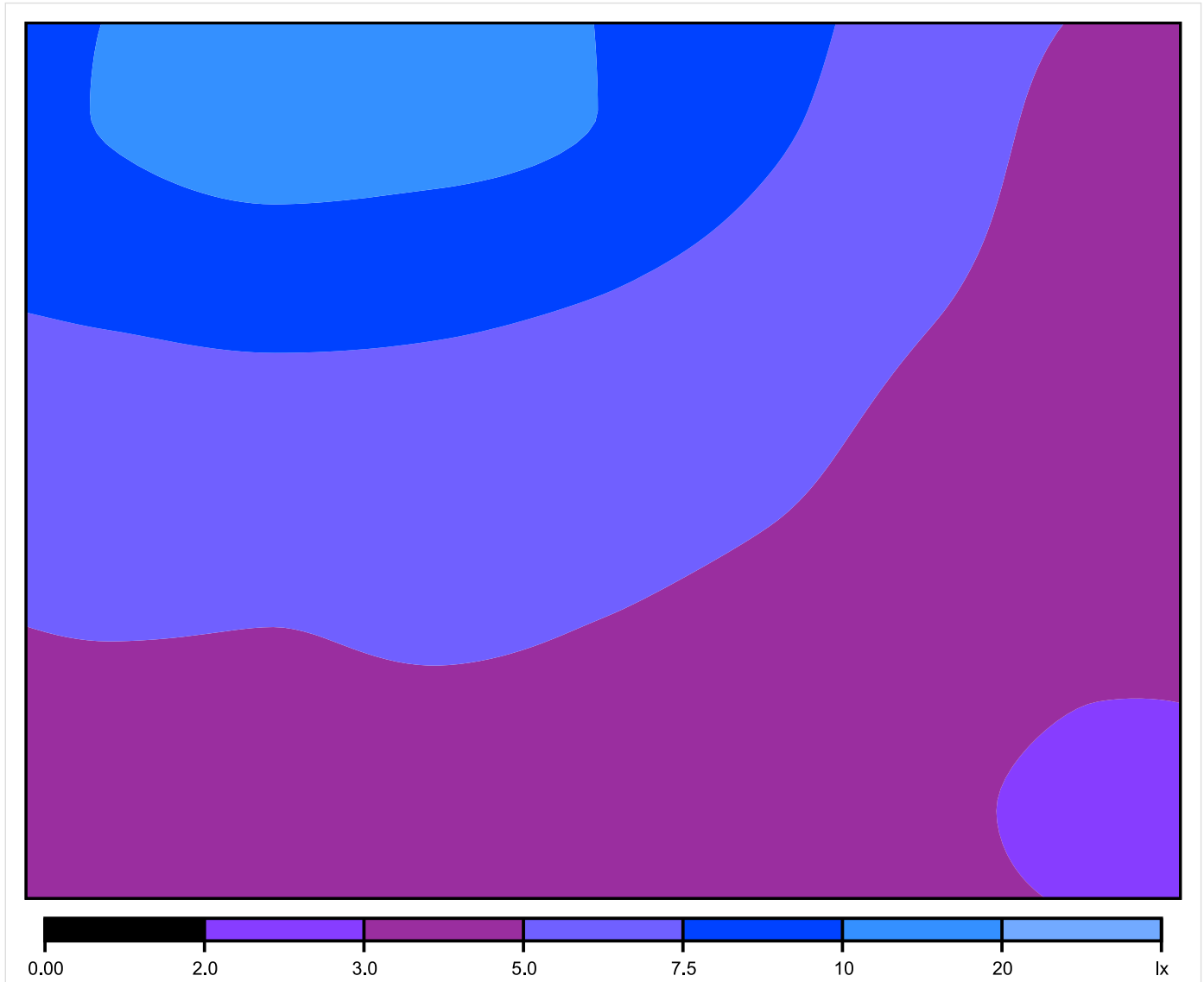
## Ombrellone 2



Profile: Aree di transito comuni nei luoghi di lavoro/ posti di lavoro all'aperto, Gallerie per pedoni, punti di inversione veicoli, zone di carico e scarico

Result	Average (Target)	Min	Max	Min/average	Min/max
Perpendicular illuminance [lx] Height: 0.800 m	5.86	2.72	11.2	0.46	0.24

## Ombrellone 2



Scale: 1 : 22

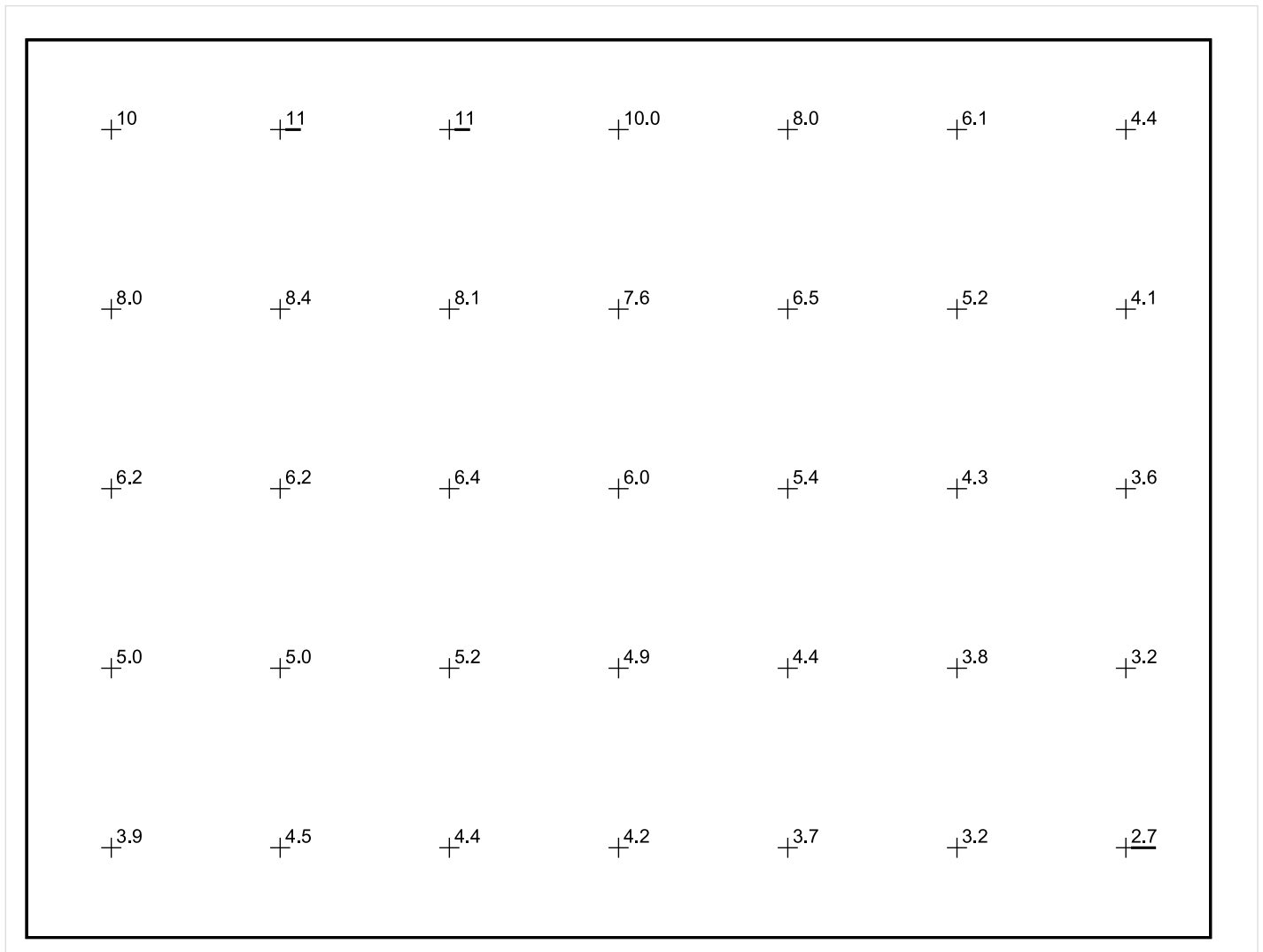
Perpendicular illuminance (Grid)

Mean (actual): 5.86 lx, Min: 2.72 lx, Max: 11.2 lx, Min/average: 0.46, Min/max: 0.24

Height: 0.800 m



## Ombrellone 2



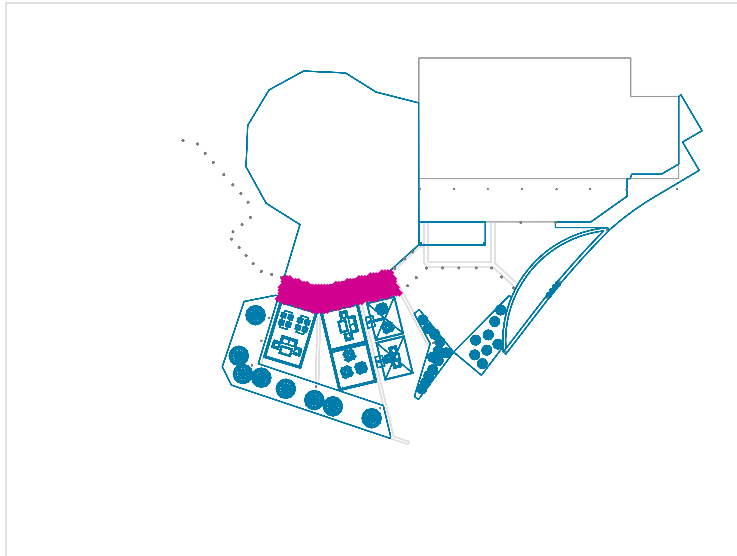
Scale: 1 : 22

Perpendicular illuminance (Grid)

Mean (actual): 5.86 lx, Min: 2.72 lx, Max: 11.2 lx, Min/average: 0.46, Min/max: 0.24

Height: 0.800 m

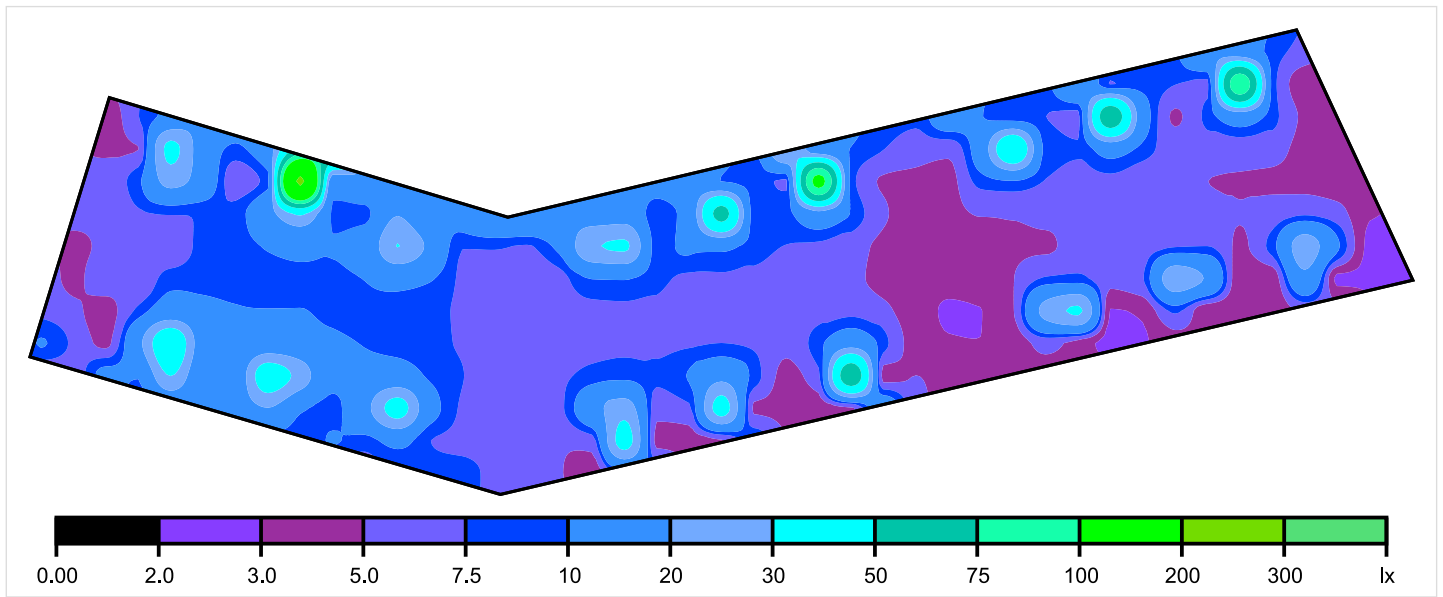
## Camminamento



Profile: Aree di transito comuni nei luoghi di lavoro/ posti di lavoro all'aperto, Gallerie per pedoni, punti di inversione veicoli, zone di carico e scarico

Result	Average (Target)	Min	Max	Min/average	Min/max
Perpendicular illuminance [lx] Height: 0.001 m	10.8	2.45	208	0.23	0.01

## Camminamento



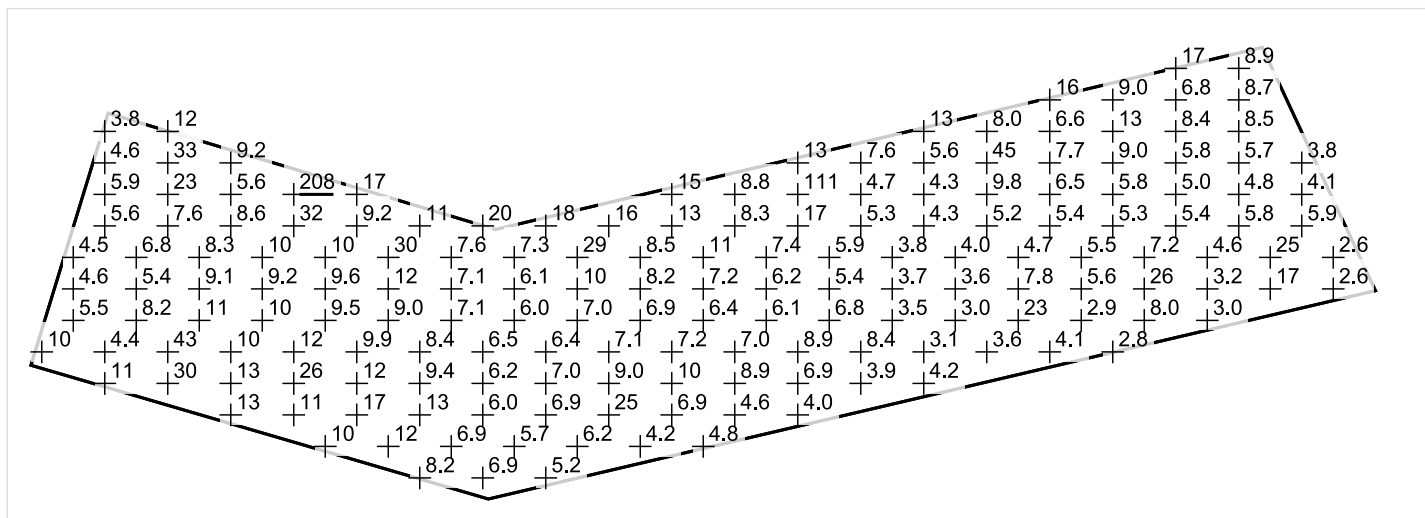
Scale: 1 : 70

Perpendicular illuminance (Grid)

Mean (actual): 10.8 lx, Min: 2.45 lx, Max: 208 lx, Min/average: 0.23, Min/max: 0.01

Height: 0.001 m

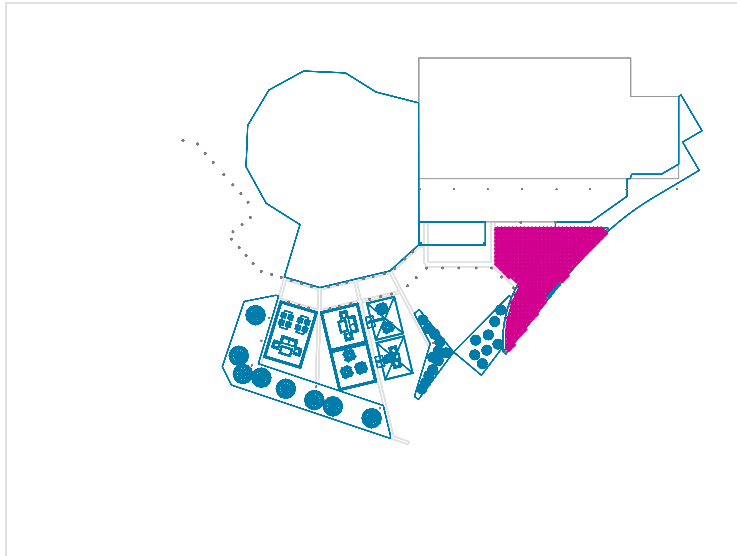
### Camminamento



Scale: 1 : 72

Perpendicular illuminance (Grid)  
Mean (actual): 10.8 lx, Min: 2.45 lx, Max: 208 lx, Min/average: 0.23, Min/max: 0.01  
Height: 0.001 m

## Area di sosta

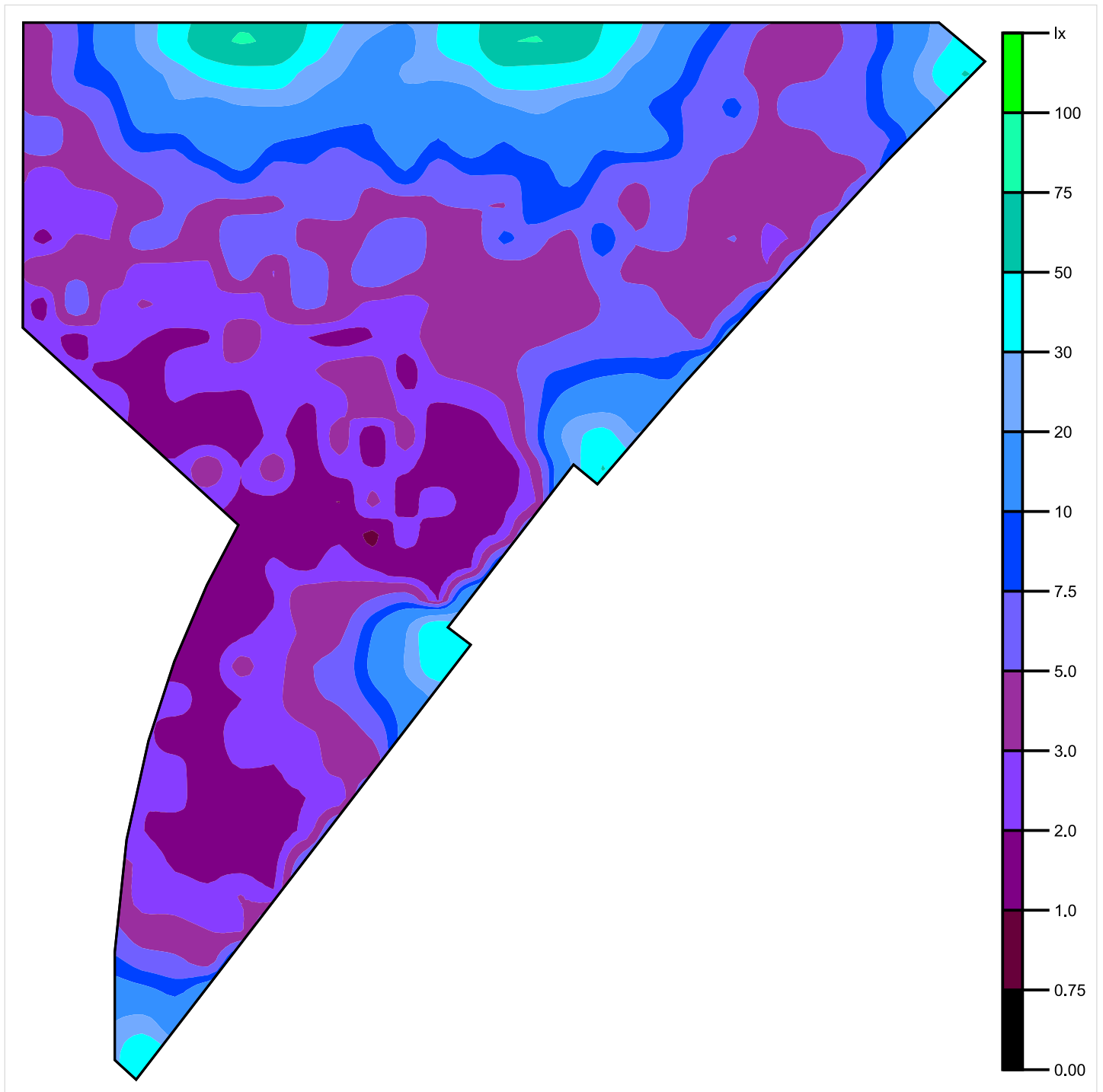


Profile: Aree di transito comuni nei luoghi di lavoro/ posti di lavoro all'aperto, Gallerie per pedoni, punti di inversione veicoli, zone di carico e scarico

Result	Average (Target)	Min	Max	Min/average	Min/max
Perpendicular illuminance [lx] Height: 0.011 m	8.43	0.79	76.5	0.09	0.01



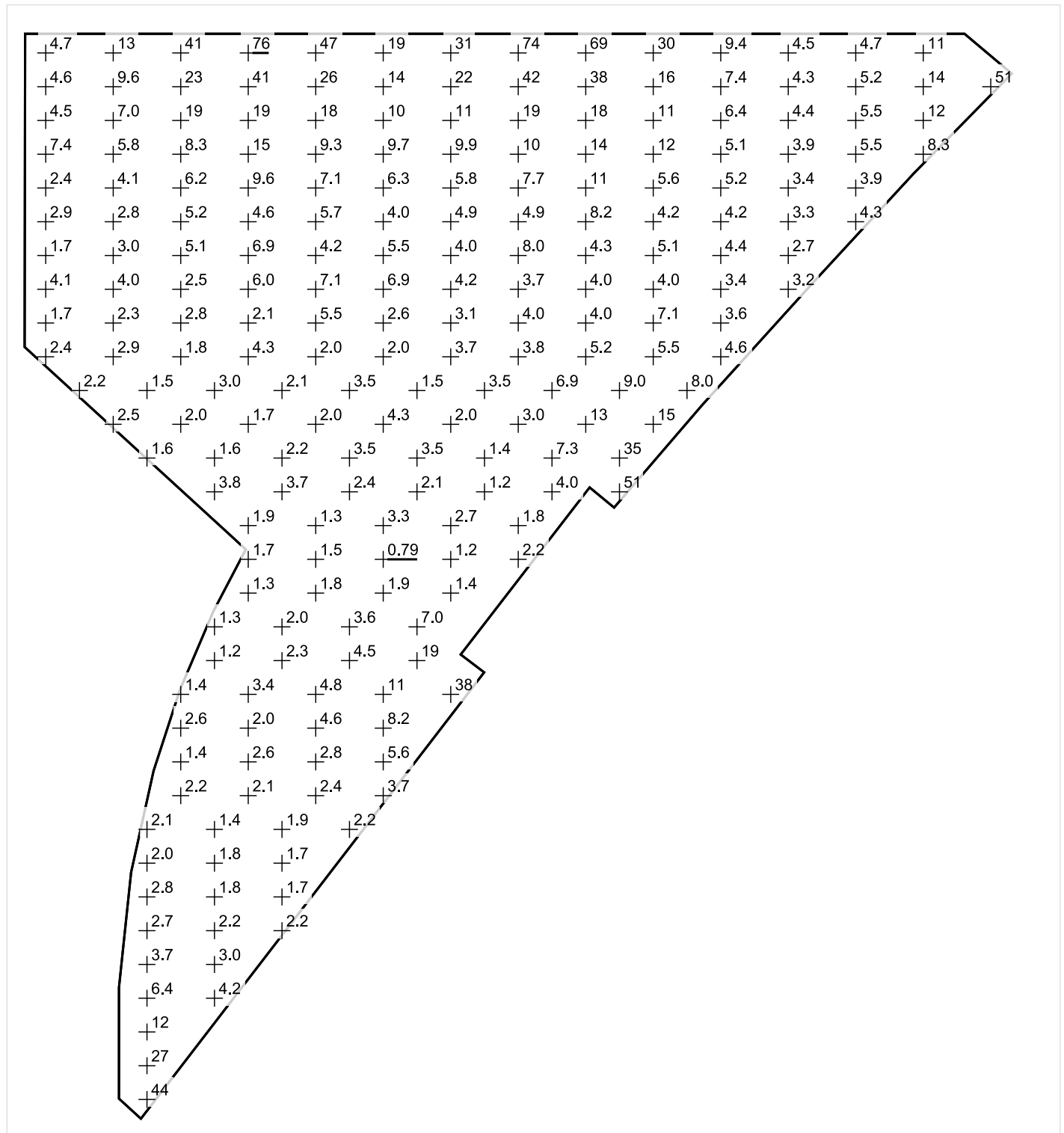
## Area di sosta



Scale: 1 : 70

Perpendicular illuminance (Grid)  
Mean (actual): 8.43 lx, Min: 0.79 lx, Max: 76.5 lx, Min/average: 0.09, Min/max: 0.01  
Height: 0.011 m

Area di sosta



Scale: 1 : 67

Perpendicular illuminance (Grid)  
 Mean (actual): 8.43 lx, Min: 0.79 lx, Max: 76.5 lx, Min/average: 0.09, Min/max: 0.01  
 Height: 0.011 m